

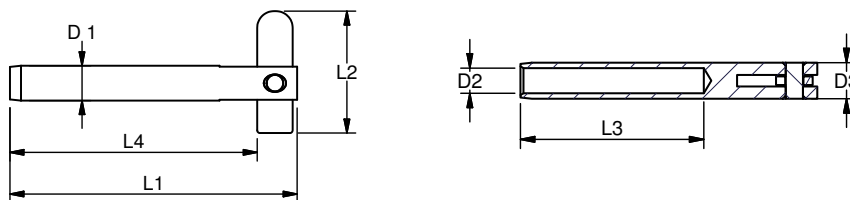


DROPNOSE TERMINAL - SMALL

Stainless Steel - AISI 316

The dropnose terminal is e.g. perfect for tube handrails with vertical wire suspensions. Almost the easiest mounting imaginable - after being attached to the wire, drill a hole and stick through the drop nose end of the terminal and let it drop!

ART. NO	WIRE DIM.	D1	D2	D3	L1	L2	L3	L4	B.L.	KG/100
A640004	4	6,3	4,4	7,6	52	22	32	45	300	1
A640005	5	7,5	5,3	8,4	52	22	32	45	400	1,3

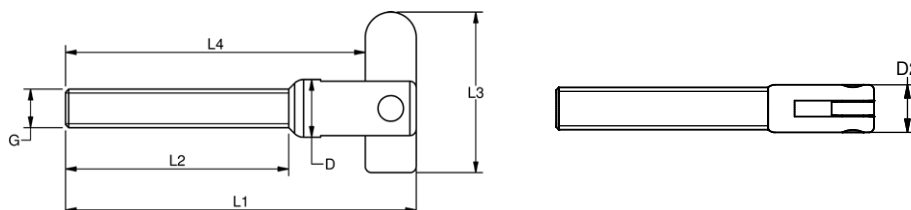


DROPNOSE THREADED - SMALL

Polished Stainless Steel - AISI 316

The dropnose for use with the small stainless steel bodies, page 40.

NO.RIGHT	NO.LEFT	G	D	D2	L1	L2	L3	L4	B.L./KG	KG/100	PACK
A3264M6	A3364M6	M6	9	9,5	55	35	25	47	600	1,9	BULK
A3264M8	A3364M8	M8	9	9,5	60	40	25	52	600	2,7	BULK

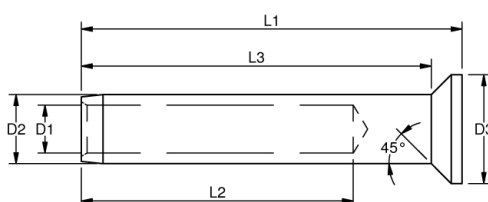


CONE TERMINALS - SMALL

Stainless Steel - AISI 316

The small cone terminals are for lighter architectural fixing of wires. The focus of the design is the size. Overall dimensions have thus been reduced to a minimum, leaving markings out. The small fittings are suitable for hand crimping with Blue Wave Arctool ACC1 & Arctool 8, see page 66+67.

ART.NO.	WIRE DIM	D	D2	D3	L1	L2	L3	B.L./KG	KG/100
A110003	3,0 1/8"	3,5	5,50	8	35	25	32,5	360	0,5
A110004	4,0 5/32"	4,4	6,35	10	35	25	32,0	640	0,7
A110005	5,0 3/16"	5,3	7,50	12	41	30	38,0	1000	1,0
A110006	6,0 -	6,5	9,0	14	52	40	48,5	1400	1,9



Angle hinge for cone terminals page 49

