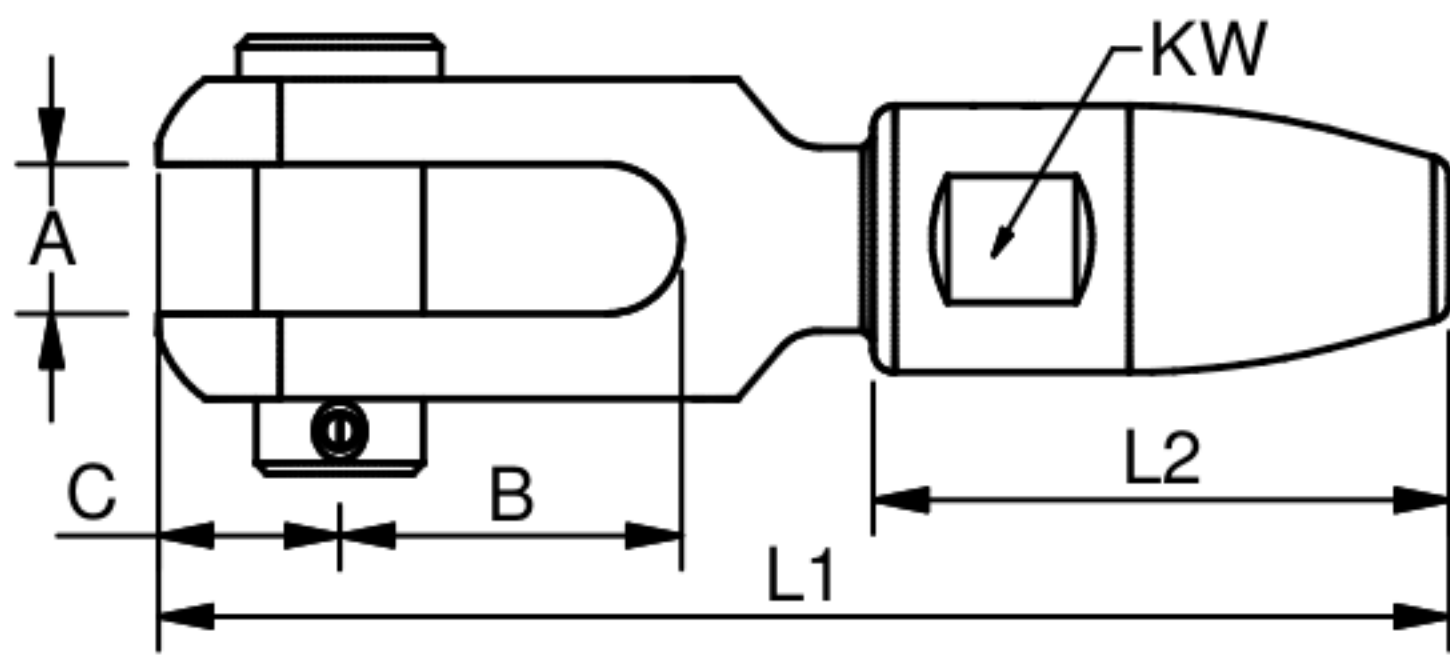


SWAGELESS CONE FORK TERMINALS

Polished stainless steel - AISI 316

ART. NO.	WIRE 1x19	PIN	A	B	C	KW	L1	L2	BL/KG	KG/100	
SC840804	4	5/32"	8	6,5	16	9	12	62	27	2200	6,1
SC841047	-	3/16"	9,5	9	21	11	14	73	30	2800	10,6
SC841005	5	-	9,5	9	21	11	14	73	30	2800	10,6
SC841355	-	7/32"	12,7	11	26	13,5	17	90	38	4400	18
SC841306	6	-	12,7	11	26	13,5	17	90	38	4400	18
SC841363	-	1/4"	12,7	11	26	13,5	17	90	38	4400	18
SC841307	7	9/32"	12,7	11	29	14,5	19	104	46	6000	26,2
SC841308	8	5/16"	12,7	11	30	13,5	22	112	54	6000	31,7
SC841608	8	5/16"	16	14	32	17	22	120	54	8000	42
SC841995	-	3/8"	19	18	35	21	27	142	64	11000	70,6
SC841910	10	-	19	18	35	21	27	142	64	11000	70,6
SC841911	-	7/16"	19	18	39	21	33	162	82	17000	108,5
SC841912	12	-	19	18	39	21	33	162	82	17000	108,5
SC841913	-	1/2"	19	18	39	21	33	162	82	17000	108,5
SC842214	14	9/16"	22	20	45	25	37	187	89	23000	157,2
SC842516	16	5/8"	25,4	22	47	26,5	42	200	100	28000	215,1
SC842819	19	3/4"	28	27	59	32,5	44	236	115	30000	292
SC843522	22	7/8"	34,8	32	72	40	50	275	125	38000	487,4
SC843526	26	1"	34,8	32	72	40	66	292	150	48000	693

Assembly instruction - see page 12



DYFORM AND COMPACTED SWAGELESS CONE TERMINALS

Polished stainless steel - AISI 316

ART. NO.	EYE TERMINAL	THREAD TERMINAL	FORK TERMINAL	TOGGLE TERMINAL
4mm 1x7	SC820804C	SC800408AC	SC840804C	SC830804C
5mm 1x19	SC821005C	SC800510AC	SC841005C	SC831005C
6mm 1x19	SC821306C	SC800612AC	SC841306C	SC831306C
7mm 1x19	SC821307C	SC800712AC	SC841307C	SC831307C
8mm 1x19	SC821608C	SC800816AC	SC841608C	SC83608C
10mm 1x19	SC821910C	SC801020AC	SC841910C	SC831910C
12mm 1x19	SC821912C	SC801222AC	SC841912C	SC831912C
14mm 1x19	SC822214D	SC801422AD	SC842214D	SC832214D
14mm 1x36	SC822214C	SC801422AC	SC842214C	SC832214C
16mm 1x19	SC822516D	SC801625AD	SC842516D	SC832516D
16mm 1x36	SC822516C	SC801625AC	SC842516C	SC832516C

Assembly instruction - see page 12

